

معرفی PLC های جدید کمپانی دلتا سری AS300



- قابلیت اتصال 32 ماژول افزایشی (1024 ورودی و خروجی)

- توانایی کنترل 8 محور تحت CAN Open

- توانایی کنترل 6 محور توسط PULSE Train

- استفاده از پردازنده قدرتمند 32 بیتی SoC

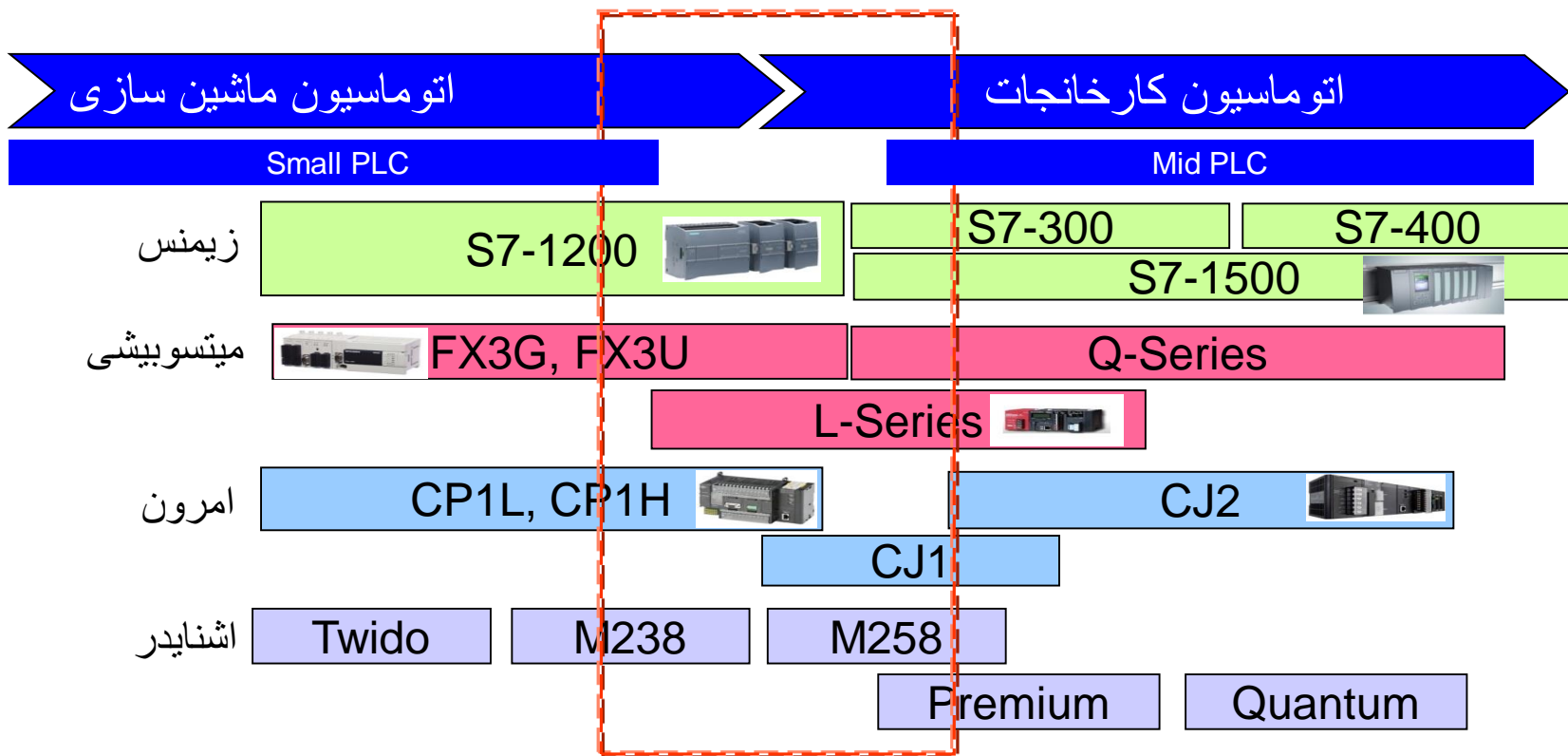
- سرعت پردازش بسیار بالا

- دارای RTC داخلی بدون نیاز به باتری

- پشتیبانی از زبانهای ST,CFC,FBD,LD,SFC



- Max. expansion ability: 32 modules
- Max. I/O points: 1,024 pts
- Supports 8+6 axes (CANopen+Pulse-train)



Function card x2

Serial

CANopen

Analog I/O

Built-in I/O

Pulse-train
output

Hardware
interrupt

High-speed
counter

I/O

mini USB

Programming

Micro SD card

Backup / Restore /
Protection

Recipe / Error code

RS-485 x2
(Isolated)

Ethernet

10/100 Mbps

MODBUS TCP & EtherNet/IP

Easy data exchange





AS332T-A (NPN out)
AS332P-A (PNP out)
AS324MT-A (Diff. out)

Spec.	Program 128 k steps	Exec. speed LD: 25 ns	Max. I/O : 1,024 pts Max. expansion : 32 modules	
	USB / RS-485 x 2 / EtherNet/IP	Micro SD Card	Function card slot x2	CANopen RIO
Built-in I/O	16DI / 16DO 12DI *2 / 12DO *1	200 kHz pulse-train axis x6 *1	200 kHz High-speed counter x6 *2	CANopen DS301 Position control

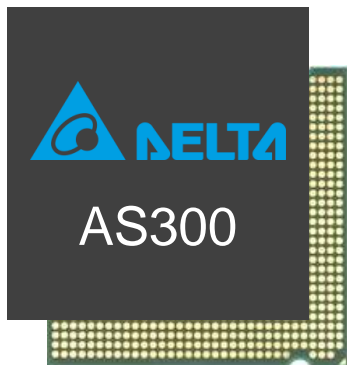
*1: AS324MT-A (Diff. out): 12DO (4 MHz x2 + 200 kHz x4 output)

*2: AS324MT-A (Diff. out): 12DI (4 MHz x2 + 200 kHz x4 input)



سرعت بالای اجرای دستورات به واسطه استفاده از پردازنده SoC

Faster execution
speed



Delta SoC
32-bit CPU

LD

AS300



25 ns

MOV

AS300



0.15 μ s

LD
40%

MOV
60%



40K steps
1ms



- توانایی کنترل 8 محور تحت شبکه CAN Open
- توانایی کنترل 6 محور توسط ارسال پالس (PULSE Train 200Khz)



CANopen

DS301



Max. 8 ASDA-A2-M



Max. 6 ASDA-B2

قابلیت اتصال 6 ورودی سرعت بالا

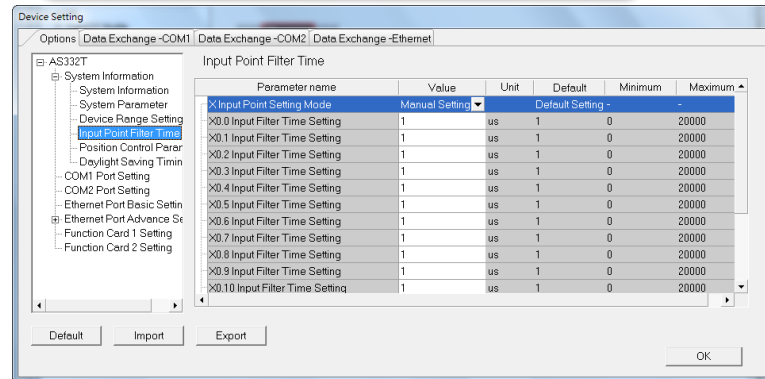


200 kHz x 6 channels

HSC setting wizard

Filter time setting for each built-in DI

16 external interrupt



Install without backplane

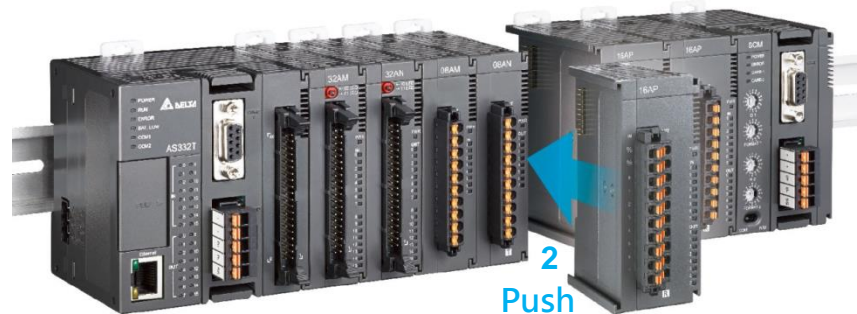
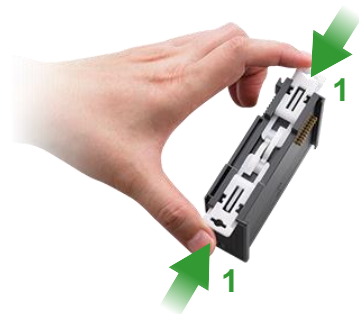
Vertical installation

Anti-vibration
3G

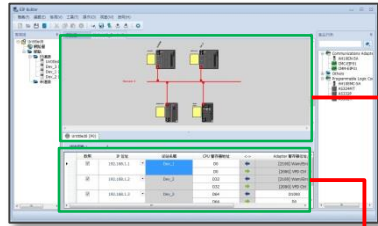
Take out



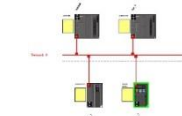
Install



توانایی پیکربندی تجهیزات توسط نرم افزار EIP Builder



Network Configuration



Graphic Network View

A screenshot of the 'Parameter Setting' window, showing a table with various configuration parameters and their values.

Parameter Setting

A screenshot of the 'Device Scan' window, showing a table with a list of discovered devices and their details.

Device Scan

Data Mapping Planning

A screenshot of the 'Data Mapping Table (TAG)' window, showing a table with columns for Data, IP Address, and other fields.

Data Mapping Table (TAG)

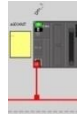
A screenshot of the 'IO Mapping Table' window, showing a table with columns for IO Address and other fields.

IO Mapping Table



Communication API / FB

Debug & Diagnosis



Device Status



Link Status

A screenshot of the 'Data mapping status' window, showing a table with columns for Data, IP Address, and other fields.

Data mapping status

Aux Tools



IP Manager



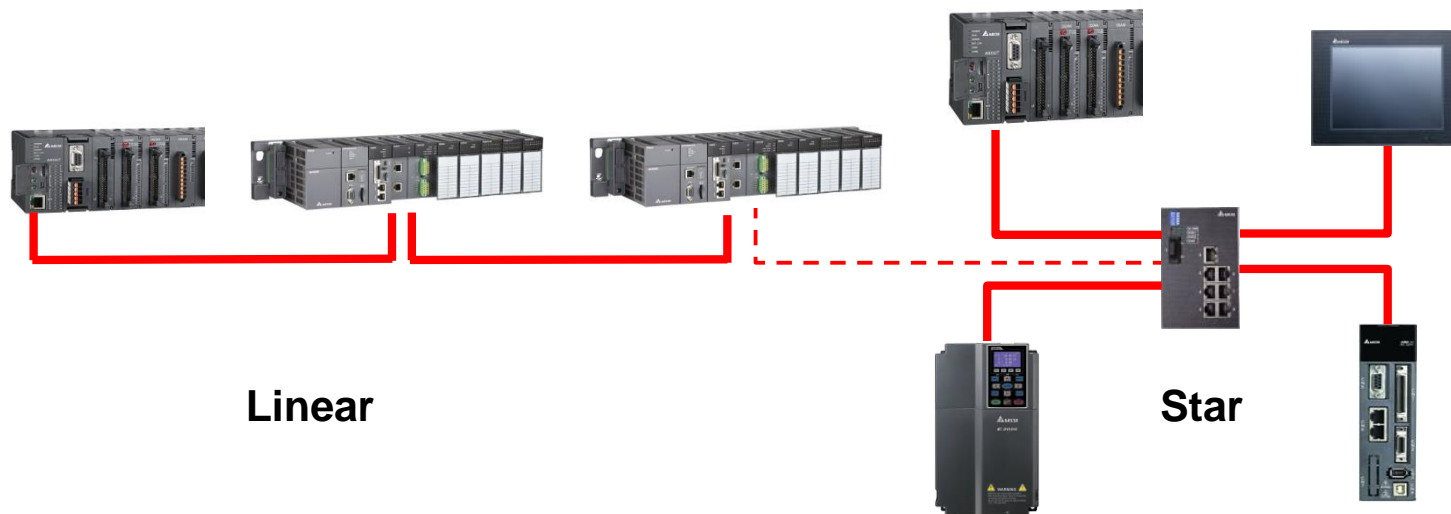
DDF manager

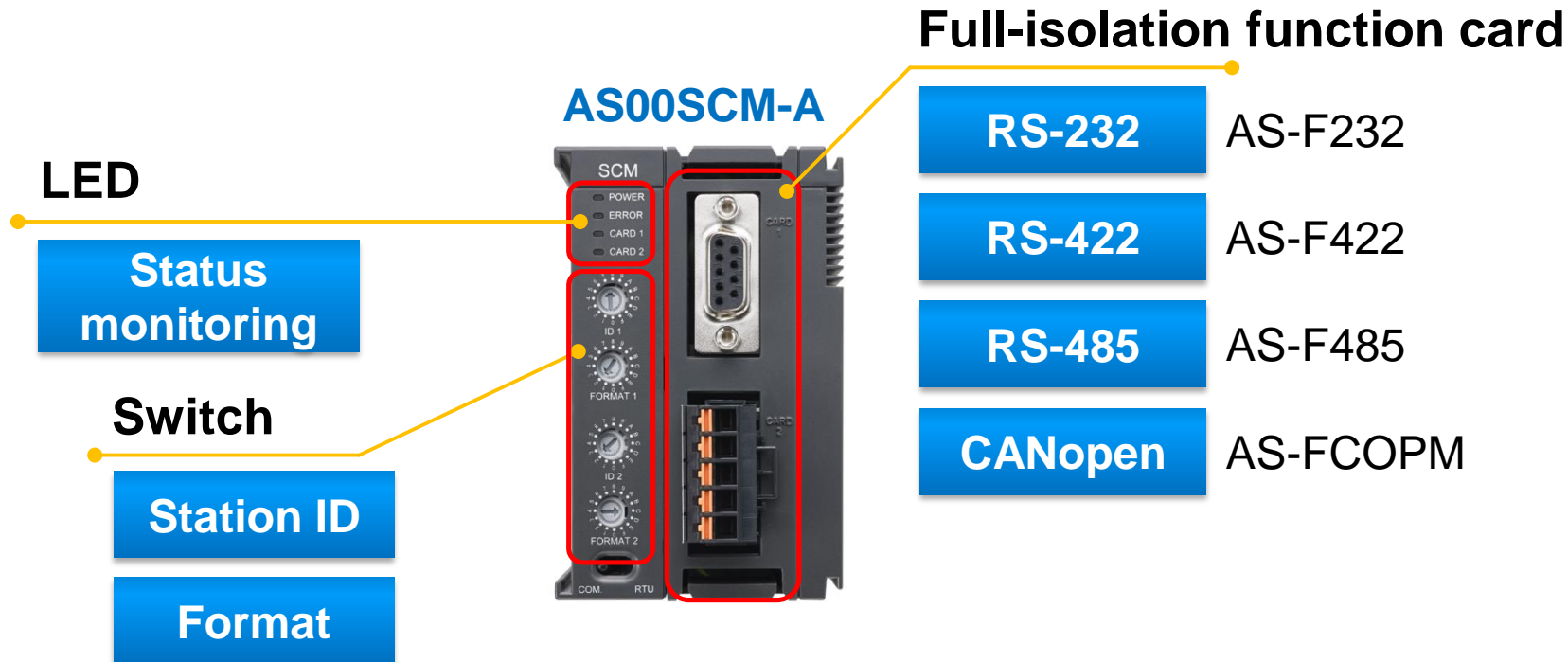


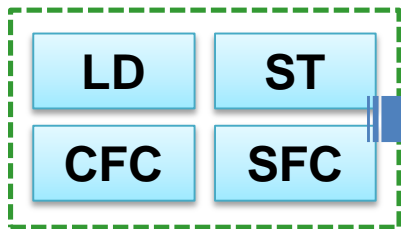
Performance Test

دارای پورت اترنت

- MODBUS TCP & EtherNet/IP
- Email, Web, SMTP, IP Filter and flexible topology

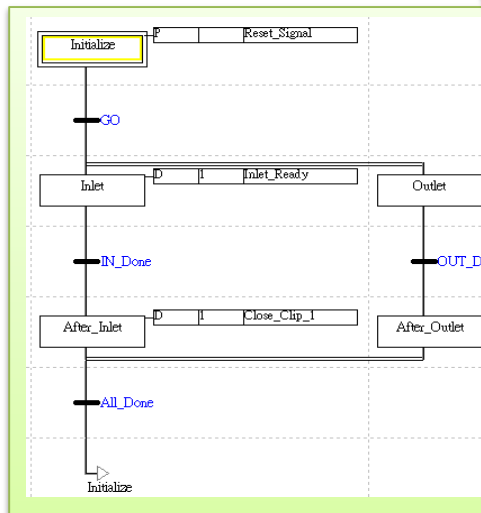
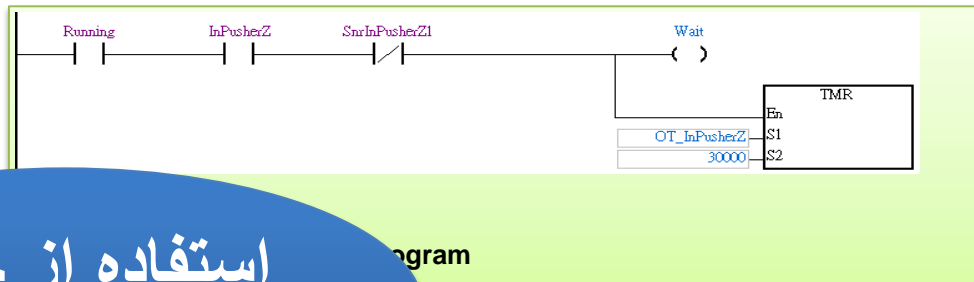




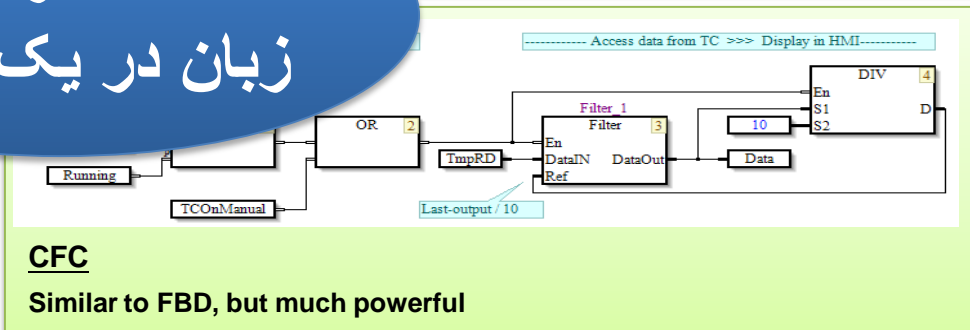


Project

استفاده از چندین زبان در یک پروژه



SFC
Easy to handle a sequential control system



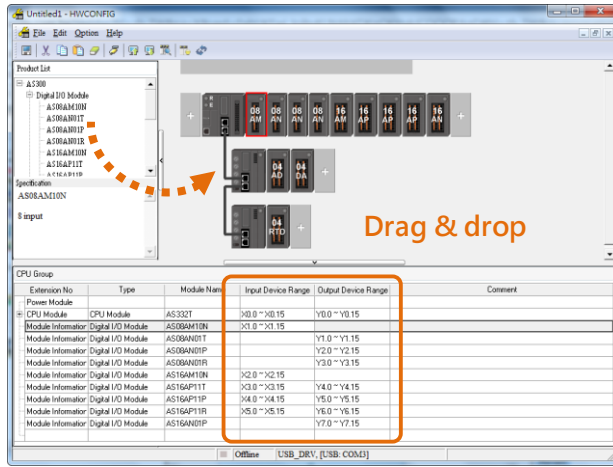
CFC
Similar to FBD, but much powerful

```

0001 (* Calculate the Yield Rate *)
0002 IF ( Pass and (Not Err) ) THEN
0003     PassCnt := PassCnt + 1 ;
0004 ELSE
0005     NGCnt := NGCnt + 1 ;
0006 END_IF ;
0007 YieldRate := ( PassCnt / ( PassCnt + NGCnt ) ) * 100 ;
0008

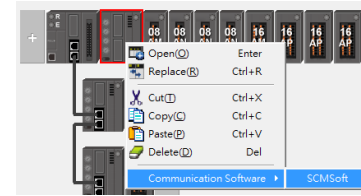
```

ST
Programming anywhere



Graphical UI

Easy to configure
Supports auto scan



Comm. setting

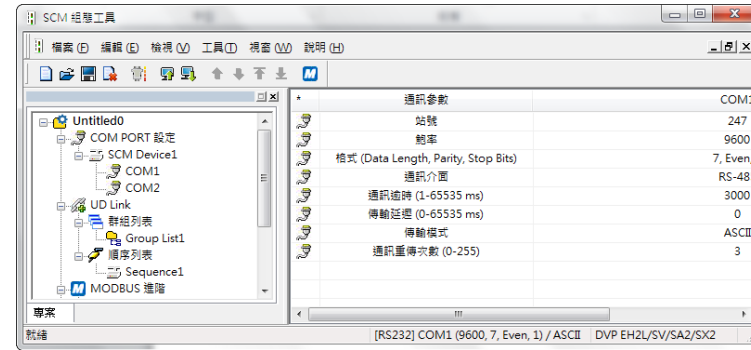
Supports advanced tool

IO table

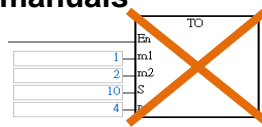
Users can set the address for each module

Para. setting

Configure module parameters without user manuals

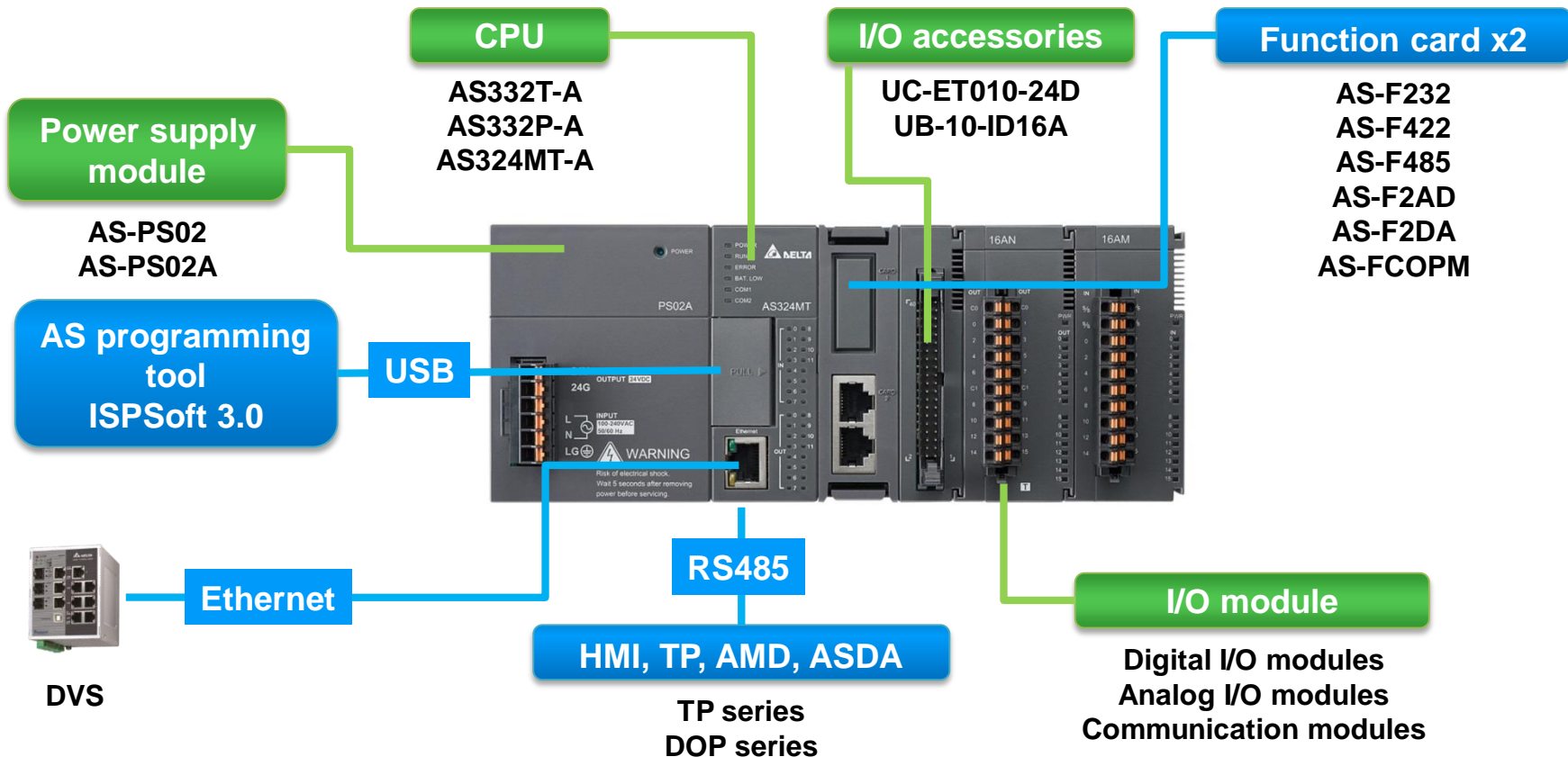


Modules are configured in HWCONFIG without FROM/TO instruction





مشخصات ماژول های افزایشی



Category Points	DI/O				Function card
	8	16	32	64	
Input	DI module AS08AM10N-A	DI module AS16AM10N-A	DI module AS32AM10N-A	DI module AS64AM10N-A	AS-F232* AS-F422* AS-F485* AS-FCOPM* AS-F2AD AS-F2DA * Supported for AS00SCM-A
Output	DO module (Transistor) AS08AN01T-A AS08AN01P-A	DO module (Transistor) AS16AN01T-A AS16AN01P-A	DO module (Transistor) AS32AN02T-A	Do module (Transistor) AS64AN02T-A	
	DO module (Relay) AS08AN01R-A	DO module (Relay) AS16AN01R-A			
Input/output	---	DIO module AS16AP11T-A AS16AP11R-A AS16AP11P-A	---		

Category	A/I/O			SCM
Channels	2	4	6	2 Ports
Input	Load cell module AS02LC-A	AI module AS04AD-A	---	Comm. module AS00SCM-A* *Function card is needed
		Temperature module AS04RTD-A AS04TC-A		
Output	---	AO module AS04DA-A	---	
Input/output	---	---	AIO module AS06XA-A	



سری AS300

بهترین پیشنهاد برای صنایع ماشین سازی

